

PATIENTS LISTED FOR SOLID ORGAN TRANSPLANTATION

Statistics for 2015



Australian Government
Organ and Tissue Authority



	KIDNEY ¹	LIVER ²	PANCREAS ³	HEART ⁴	LUNG ⁴	TOTAL*
Transplant Waiting Lists – Patients Listed 2015						
Waiting list active at start of year	1,141 (60%)	186 (36%)	59 (58%)	60 (38%)	111 (34%)	1,557 (52%)
New listings	760 (40%)	335 (64%)	42 (42%)	98 (62%)	211 (66%)	1,446 (48%)
Total patients listed during the year (Active at start year + new listings)	1,901	521	101	158	322	3,003

*Patients listed on more than one organ transplant waiting list may be counted more than once, however the number of patients requiring multi-organ transplants is relatively small.

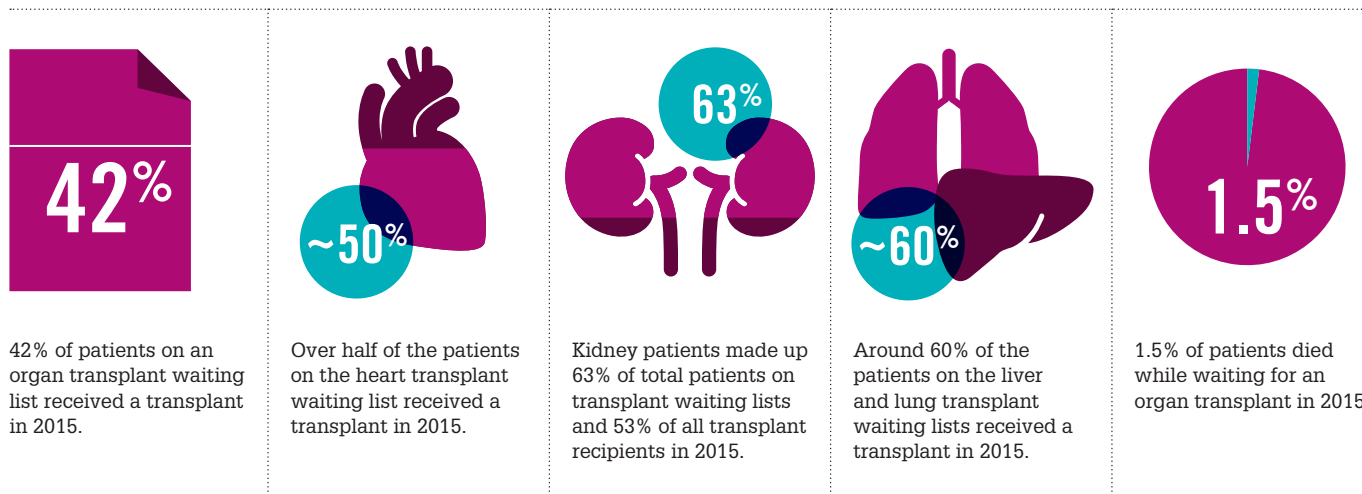
	KIDNEY ¹	LIVER ²	PANCREAS ³	HEART ⁴	LUNG ⁴	TOTAL*
Transplant Waiting Lists – Patient Outcomes 2015						
Patients Transplanted	677 (36%)	265 (51%)	45 (45%)	93 (59%)	195 (61%)	1,275 (42%)
Died on list	8 (0.4%)	18 (3.5%)	4 (4%)	5 (3.2%)	9 (2.8%)	44 (1.5%)
Removed from list	155 (8%)	52 (10%)	40 (12%)	16 (10%)	33 (10%)	268 (9%)
Active end year	1,061 (56%)	186 (36%)	40 (40%)	44 (28%)	85 (26%)	1,416 (47%)
Total patients listed during the year (Active at start year + new listings)	1,901	521	101	158	322	3,003

	KIDNEY ¹	LIVER ²	PANCREAS ³	HEART ⁴	LUNG ⁴	TOTAL*
Patients listed and transplanted by Organ Type						
Patients on waiting list by organ type	1,901 (63%)	521 (17%)	101 (3%)	158 (5%)	322 (11%)	3,003
Patients transplanted by organ type	677 (53%)	265 (21%)	45 (4%)	93 (7%)	195 (15%)	1,275

Source:

- 1 Australia and New Zealand Dialysis and Transplant Registry (ANZDATA) <http://www.anzdata.org.au/> and National Organ Matching System (NOMS)
- 2 Australia and New Zealand Liver Transplant Registry (ANZLTR) <http://www.anzltr.org/>
- 3 Australia and New Zealand Islet and Pancreas Transplant Registry (ANZIPTR) <http://www.anziptr.org/>
- 4 Australia and New Zealand Cardiothoracic Organ Transplant Registry (ANZCOTR) <http://www.anzcotr.org.au/>

Key messages



PATIENTS LISTED FOR SOLID ORGAN TRANSPLANTATION

Statistics for 2015

Glossary

Waiting list active start of year

This data refers to the count of patients who were listed for the respective organ indicated at the start of a calendar year. Active refers to those patients who are listed as active and if called, when an organ becomes available, have been assessed to be prepared and able to accept an organ transplant, unless otherwise indicated at the time of the call.

New listings

This data refers to patients moving on to the active deceased donor waiting list during the calendar year of reporting, from never being on or previously taken off (removed).

Patients transplanted

This is the number of patients on the active deceased donor waiting list that received a transplant during the calendar year of reporting.

Total patients listed during the year

The cumulative number of patients listed on solid organ transplant waiting lists during the calendar year. This is not the number of patients listed on solid organ waiting lists at any given month.

Died on list

This data refers to those patients who died while on the active deceased donor waiting list. Year of death is during the reporting year.

Removed from list

This data refers to those patients taken off (removed from) the active deceased donor waiting list during the calendar year of reporting.

Active end of year

This data refers to those still on the active deceased donor waiting list at the end of the calendar year of reporting.